

Novice Stations Activity

Look at the pictures and then choose your answers from the lists below.

| Parts of a Western Bridle | Parts of a Western Saddle | Breeds | Colors |
|------------------------------|------------------------------|--------------|----------|
| Throatlatch | Cantle | Arabian | Chestnut |
| Curb Chain | Fender | Friesian | Black |
| Reins | Seat | Halflinger | Grey |
| Crownpiece | Stirrup | Thoroughbred | Dun |
| Bit | Horn | Clydesdale | Bay |

Match the number of each picture to the number below when writing your answers.

| | Parts of a Western Bridle | Parts of a Western Saddle | Breeds | Colors |
|---|------------------------------|------------------------------|--------|--------|
| 1 | | | | |
| 2 | | | | |
| 3 | | | | |
| 4 | | | | |
| 5 | | | | |

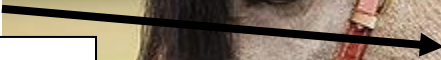
Parts of a Bridle: Western

Name the part of the western bridle that each arrow is pointing to.

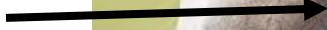
#1

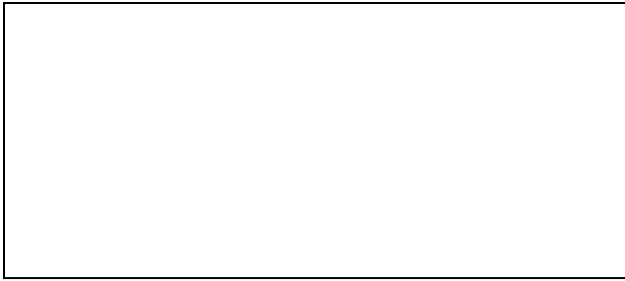


#2



#3

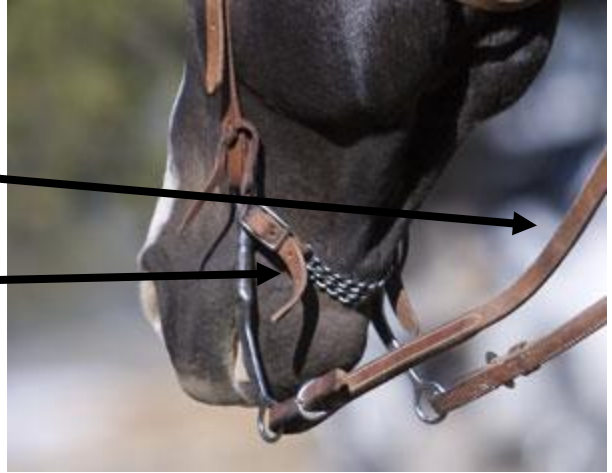
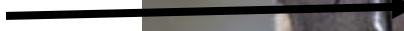




#4



#5



Parts of a Western Saddle

Name the part of the western saddle that each arrow is pointing to.



Horse Breeds

Name the breed of horse you see here.



1.



2.



3.



4.



5.

Colors

Name the color of horse you see here.



1.



2.



3.



4.



5.